

The background features a series of overlapping, wavy lines in a light red color, creating a sense of motion and depth. The lines are most prominent on the left and right sides, curving towards the center.

**DESIGN COLLECTION**

**SPECTER KOREA**

**2020**





WACX 857



WACX 858



WACX 859



WACX 860



WACX 861





WAMX 867



WAMX 868



WAMX 869



WAMX 870



WAMX 871





WAMX 852



WAMX 853



WAMX 854



WAMX 855



WAMX 856





WACX 882



WACX 883



WACX 884



WACX 885



WACX 886





WAMX 887



WAMX 888



WAMX 889



WAMX 890



WAMX 891





WAMX 872



WAMX 873



WAMX 874



WAMX 875

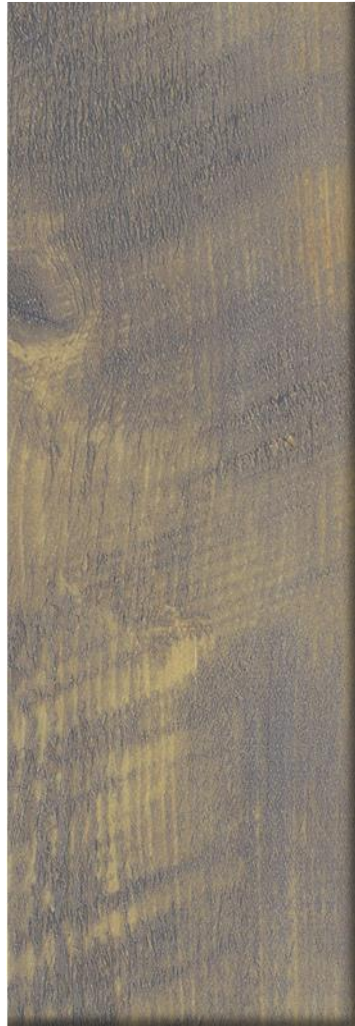


WAMX 876





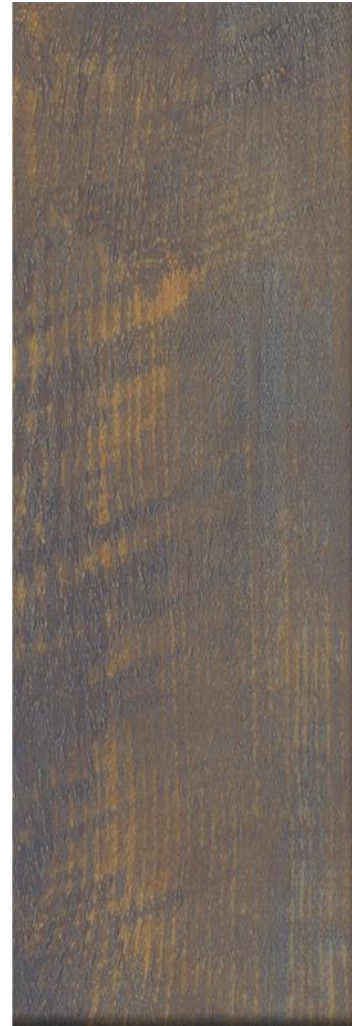
WACX 847



WACX 848



WACX 849



WACX 850



WACX 851





WAMX 877



WAMX 878



WAMX 879



WAMX 880



WAMX 881





WACX 862



WACX 863



WACX 864



WACX 865



WACX 866





AAMX 880



AAMX 881



AAMX 882



AAMX 883



AAMX 884





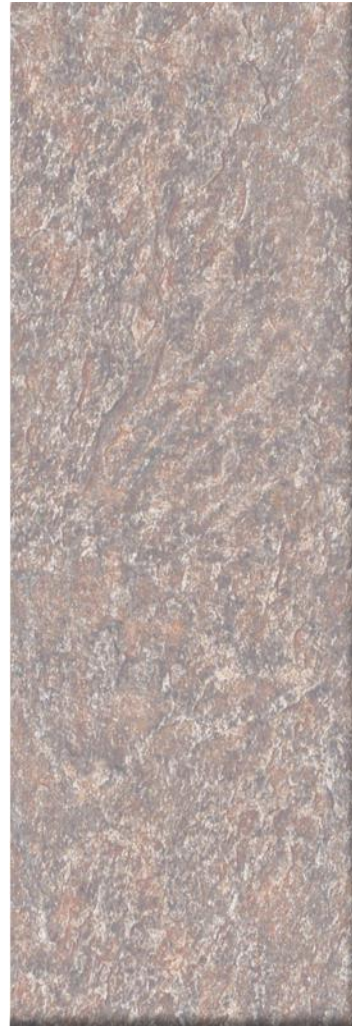
AACX 895



AACX 896



AACX 897

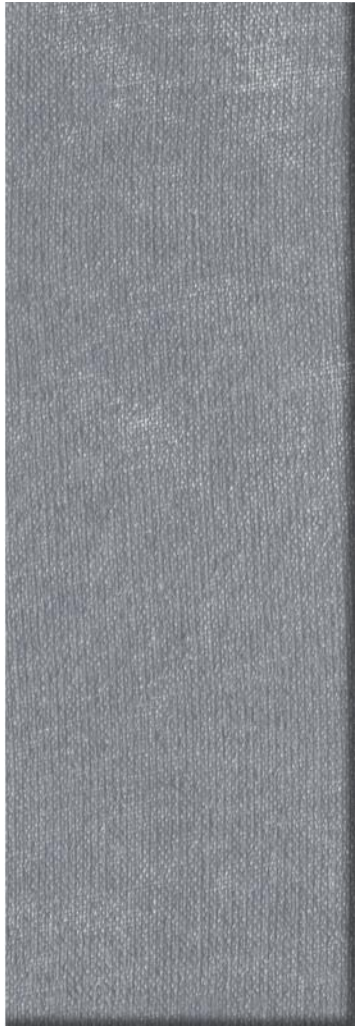


AACX 898



AACX 899





AACX 890



AACX 891



AACX 892



AACX 893



AACX 894





AACX 865



AACX 866



AACX 867

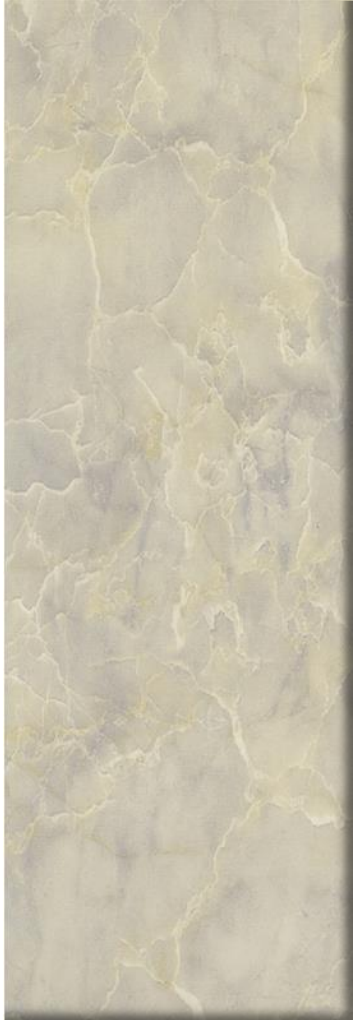


AACX 868



AACX 869





AACX 860



AACX 861



AACX 862



AACX 863



AACX 864





AACX 885



AACX 886



AACX 887



AACX 888



AACX 889





AACX 875



AACX 876



AACX 877



AACX 878



AACX 879





AACX 870



AACX 871



AACX 872



AACX 873



AACX 874





GAMX 1008



GAMX 1009



GAMX 1010



GAMX 1011

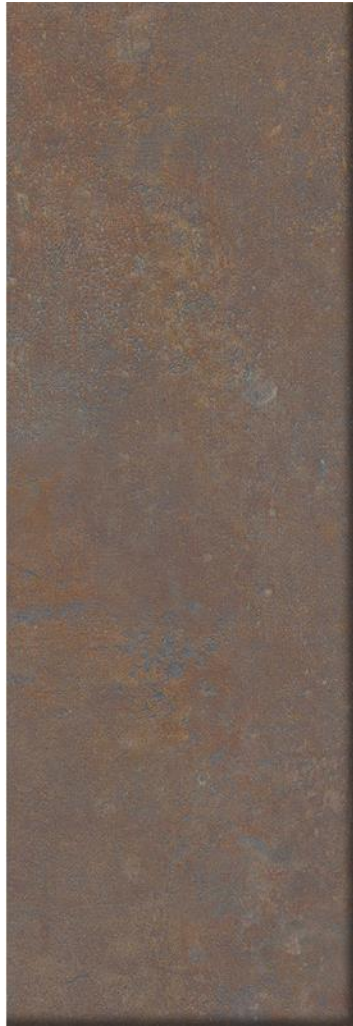


GAMX 1012





GACX 1013



GACX 1014



GACX 1015



GACX 1016



GACX 1017





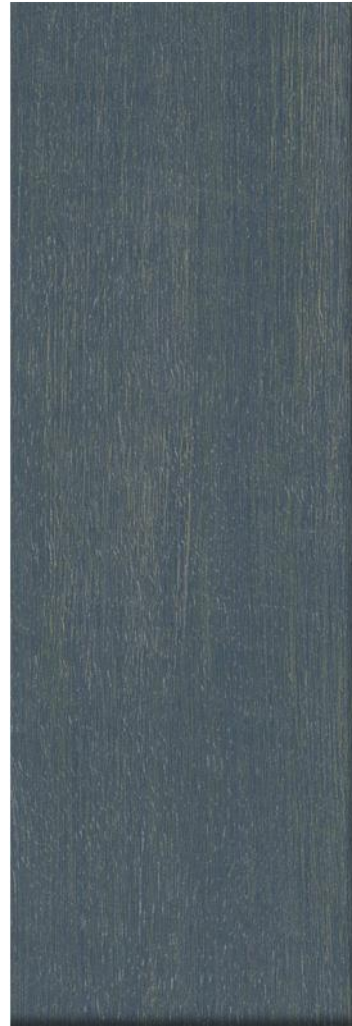
GAMX 1018



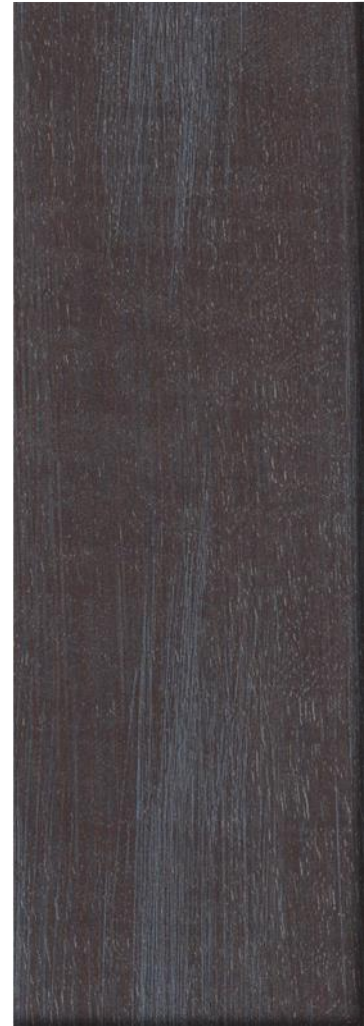
GAMX 1019



GAMX 1020



GAMX 1021



GAMX 1022





GACX 1023



GACX 1024



GACX 1025



GACX 1026

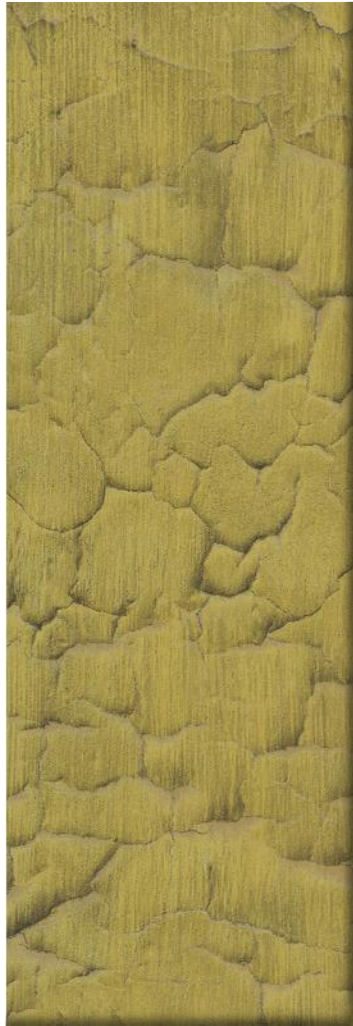


GACX 1027





GACX 1033



GACX 1034



GACX 1035

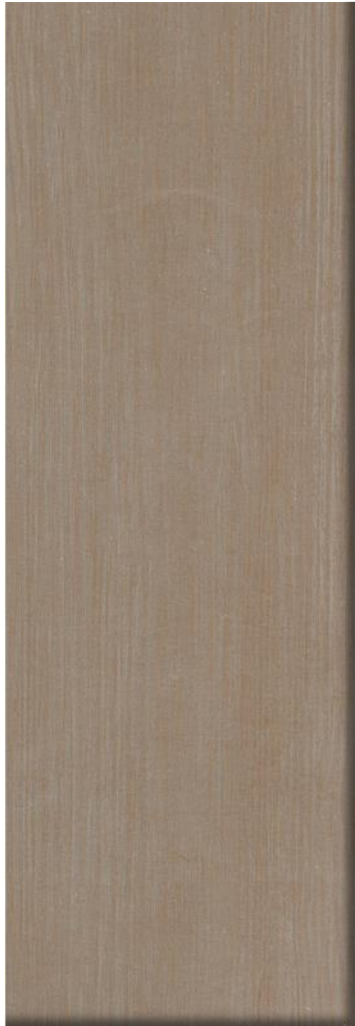


GACX 1036



GACX 1037





GAMX 1028



GAMX 1029



GAMX 1030



GAMX 1031



GAMX 1032





GACX 1003



GACX 1004



GACX 1005



GACX 1006



GACX 1007